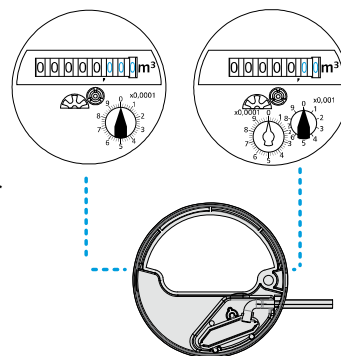


Impulssväljundmooduli paigaldus "D" registrile

Asetage moodul sõltuvalt loenduri tüübist vastavalt joonisele paigale ning kinnitage moodul kruviga.

Vältimaks volitamata mooduli eemaldamist, katke kruvi kleepsuga.

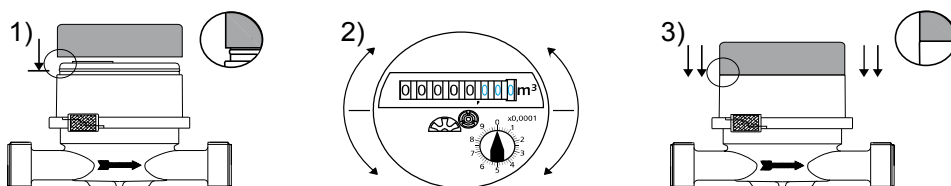
1 l/Imp 10 l/Imp



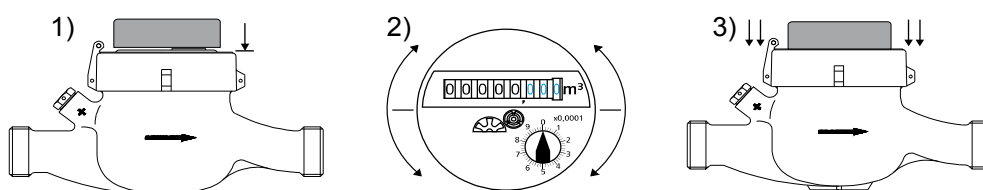
8-kohaline loendur

7-kohaline loendur

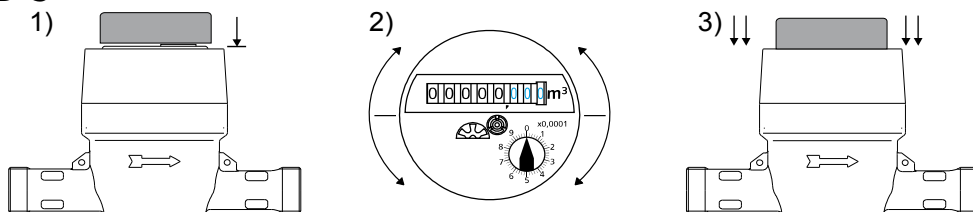
ETKD/ETWD



MTKD/MTKD-S



RTKD-S



Tehnilised andmed:

Impulssmoodul on varustatud kaitsva takistiga
47Ω, ¼ W.

